

# COMPANY OVERVIEW



## FOR IMMEDIATE RELEASE

### **LYNX Technik AG Contact:**

Winfried Deckelmann  
LYNX Technik AG  
Brunnenweg 3  
D-64331 Weiterstadt, Germany  
Phone: +49 6150 18170  
Fax: +49 6150 181710  
Email: [info@lynx-technik.de](mailto:info@lynx-technik.de)  
Website: [www.lynx-technik.de](http://www.lynx-technik.de)

### **LYNX Technik, Inc. Contact:**

Steve Russell  
LYNX Technik, Inc.  
26366 Ruether Ave.  
Santa Clarita, CA 91350 USA  
Phone: +1 661-251-8600 ext. 301  
Fax: +1 661-251-8088  
Email: [infousa@lynx-technik.com](mailto:infousa@lynx-technik.com)  
Website: [www.lynx-technik.com](http://www.lynx-technik.com)

### **Press Contact:**

Kimberley Fuller  
Delamere Marketing  
New York, NY USA  
Phone: +1 917-675-6050 Mobile: +1 310-469-8190  
Email: [kim@delameremarketing.com](mailto:kim@delameremarketing.com)

LYNX Technik AG is an industry leader and technology provider of modular signal processing equipment for broadcast, post production and professional audio visual use. LYNX is an independent privately owned company with its headquarters, research and manufacturing based in Weiterstadt, Germany. Sales and support is covered from its headquarters in Germany and the USA.

The LYNX team consists of a multi-talented group of Emmy award winning engineers that combine decades of experience from the broadcast and post production industries. LYNX carefully researches and develops products in close cooperation with broadcasters worldwide to help users specify and set performance levels that ultimately provide the highest quality solutions.

LYNX Technik has designed a full line of signal processing solutions to offer broadcast, post, and professional AV professionals an affordable, compact and extremely flexible solution for audio and video processing. The solutions have been designed to satisfy all of today's most demanding digital Broadcast requirements and have been configured to meet the needs of a variety of levels of technical sophistication.

The LYNX range of signal processing equipment is versatile and reliable, has been rigorously tested, and has been proven to work in the most demanding of multi-format environments. Applications include; mobile vans (OB trucks), broadcast master control rooms, production

# COMPANY OVERVIEW



studios, network operating centers, post production, video duplication facilities, houses of worship facilities, a vast variety of government applications and more.

The entire LYNX product line is designed around flexibility. Invest in the functionality you need right now, and upgrade quickly by purchasing license codes for added features in the future. This eliminates the need to purchase new hardware, and absolutely no reprogramming is required.

The LYNX product line includes:

- **Series 5000**
  - SD/HD rack-mount and card-based modular interface solutions including: converters, distribution amplifiers, embedders / deembedders, frame synchronizers, audio delay, and test signal generators
  - Includes the **FLEXCARD** series of user-definable "one card – many solutions"



- **Series 3000**
  - SD/HD "brick-style" line of stand-alone or rack-mount interface products including: converters, embedders / deembedders, distribution amplifiers, frame synchronizers, and test signal generators

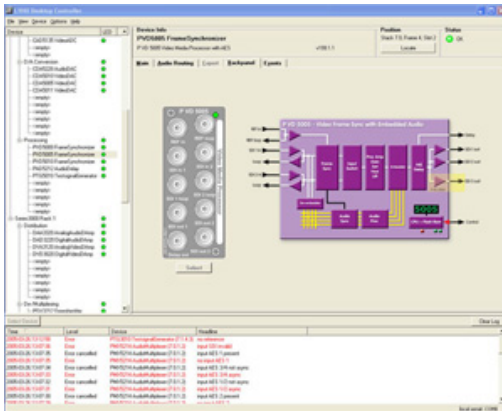


# COMPANY OVERVIEW



- **LYNX Control System**

- Self-configuring control system for remote control, status monitoring and SNMP error reporting of all installed Series 5000 and 3000 modules



- **Testor**

- Compact, hand-held digital test signal generator



- **Yellobrik**

- Robust, miniature, stand-alone, and cost-effective "brick-style" modules that are extremely easy to use including: sync pulse generators with genlock, distribution amplifiers, and fiber optic transmitters, receivers and transceivers.

# COMPANY OVERVIEW

